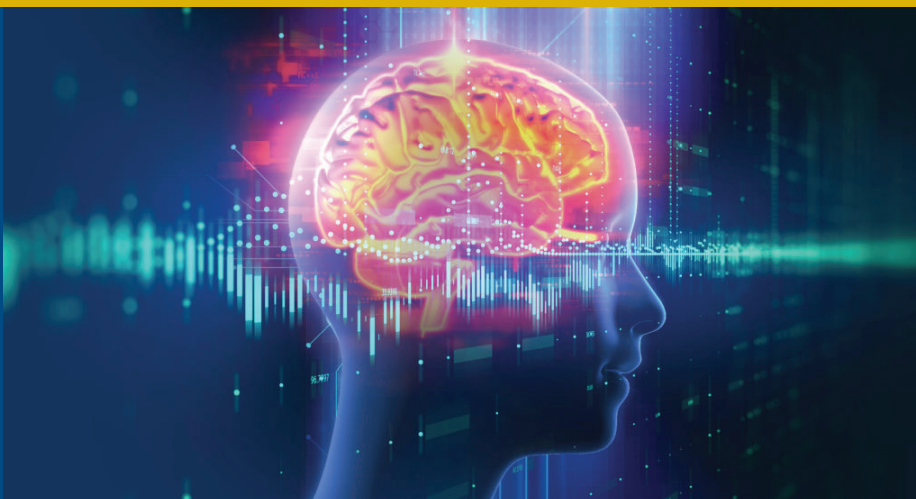


**Enrollment is offered  
at no cost. Complete  
the asynchronous  
CME modules today.**



Scan the QR  
code to register  
and learn more.

We are grateful for the  
Parkinson's Foundation  
Empowering Parkinson's  
Disease Care Community  
Outreach Award which  
provided partial funding  
for this education.



## **Parkinson's Disease: A Multidisciplinary Approach to 360° Care**

This modular, asynchronous education program is planned to roll out over the 2025 calendar year. It covers a variety of topics related to the clinical management of Parkinson's disease. Modules are designed to be completed during your lunch hour or another time at your convenience; most are 60-75 minutes long.

### **Complete the following CME modules today:**

- Module 1: Introduction to Parkinson's Disease [[Enroll Now](#)]
- Module 2: Managing Symptoms of Parkinson's Disease [[Enroll Now](#)]
- Module 3: Assessing Cognition and Mood in Parkinson's Disease [[Enroll Now](#)]
- Module 4: Allied Health Strategies [[Enroll Now](#)]

Coming soon — Additional modules may include topics such as:

- Mimics of Parkinson's Disease
- Care Coordination and Case Studies Scenarios

**Have questions? Contact us at [HS-Parkinsons@ucdavis.edu](mailto:HS-Parkinsons@ucdavis.edu)**

*Note: Content for this program is taken from the September 14, 2024 conference. Those who attended the conference are not eligible to receive credit for this program.*